



DELL™ EQUALLOGIC™ PS SERIES WITH VMWARE SITE RECOVERY MANAGER
SIMPLE, AFFORDABLE, AUTOMATED DISASTER RECOVERY

Dell EqualLogic helps lower the cost of disaster recovery through automation:

- Simple, intuitive interface and scheduling
- SAN-based replication bundled at no additional cost
- Highly available solution for mission critical deployments
- Directly integrated with IP networks
- Advanced support for easy testing and failover/failback

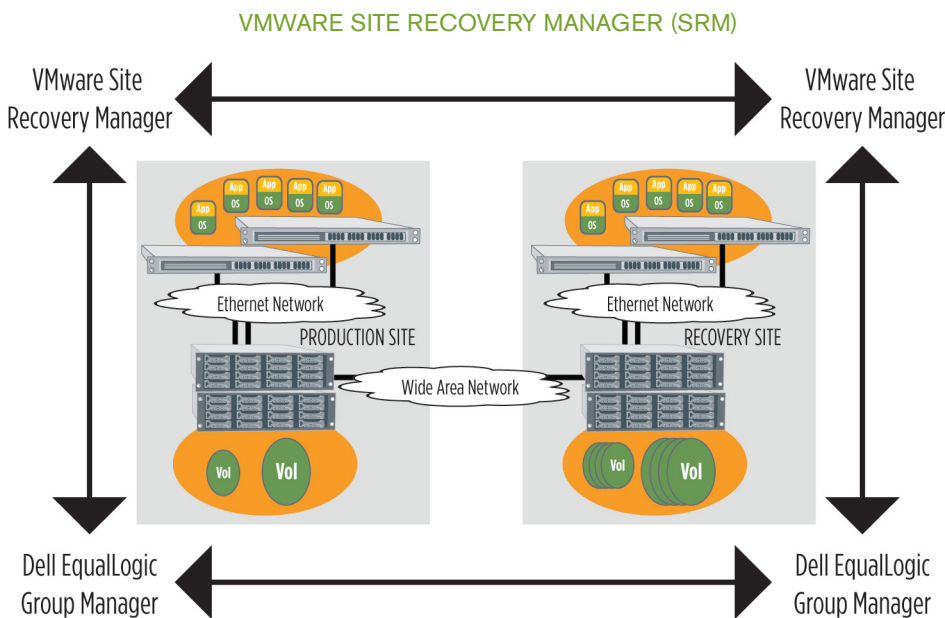
LEGACY IT INFRASTRUCTURES MAKE DISASTER RECOVERY DIFFICULT

Organizations of all sizes struggle to design, implement, and test business continuity / disaster recovery (BC/DR) solutions for their IT environments. Classically, IT environments have been made up of application servers with direct attached storage (DAS) tied to individual functional organizations or single business processes. Consequently, disaster recovery solutions had to be implemented at the departmental, functional, or application level. Most of these solutions have been costly, complex, and incompatible while lacking the capability to orchestrate a complete site failover. Often, if a business application didn't have DR capabilities built in, it was virtually impossible to protect. With these challenges to overcome, it is not surprising that many businesses still do not have disaster recovery plans in place.

VIRTUALIZED STORAGE AND SERVER INFRASTRUCTURES ENABLE SIMPLE, AFFORDABLE DISASTER RECOVERY

As organizations have adopted server virtualization and storage area network (SAN) technologies, improvements have been made. Server virtualization consolidates business application environments into a manageable infrastructure transparent to the underlying hardware, while SAN technologies consolidate corporate data assets into a consolidated networked resource. Still, issues remain.

As in physical environments, disaster recovery techniques and procedures in virtualized environments are implemented manually, dependent on extensive scripting and documentation that may be difficult to develop and maintain for all but the largest IT organizations. Storage area networks can be costly and complex, not only to acquire and deploy, but also to operate – and these are often dependent on vendor implementation and management services. SAN-based disaster recovery solutions may require licensed replication software that is cumbersome and expensive, requires costly annual support contracts, and is too often dependent on additional hardware for integration into the customer's wide area network.



VMware Site Recovery Manager (SRM) is integrated with VMware Infrastructure 3, VMware VirtualCenter, and PS Series Auto-Replication software from Dell. It guides users through the process of setting up and configuring recovery plans for their virtualized IT environment. At the time of failover, SRM automatically runs the recovery plan – starting virtual machines in the proper order with updated networking configurations. Testing disaster recovery plans is also made easy by executing the failover in an isolated test environment, then cleaning-up the environment for non-disruptive testing

NEW SOLUTIONS FOR COMPLETE SITE RECOVERY FROM DELL AND VMWARE®

VMware Site Recovery Manager (SRM) is a new VMware Infrastructure 3-based solution that is tightly integrated with Dell EqualLogic PS Series storage to offer centralized disaster recovery management, automation, and testing for a virtualized datacenter. The integrated solution utilizes the PS Series' native Auto-Replication feature, integrated directly into Site Recovery Manager using specialized storage adapter software developed by Dell. SRM enables non-disruptive, automated testing of recovery plans and automates the recovery process, while the PS Series supplies cost effective and easy-to-configure replication over existing IP networks. The core server virtualization platform that provides IT environments with the tools to help reduce the cost and complexity of managing their IT infrastructure now expands to simplify disaster recovery as well. Storage and server virtualization solutions from VMware and Dell provide the infrastructure for the fully virtualized data center, enabling a dynamic, highly automated computing environment.

An enterprise-class virtualized storage infrastructure that provides data protection, disaster recovery, and business continuity is affordable today with PS Series solutions. iSCSI connectivity allows organizations to leverage their existing Ethernet infrastructure instead of a complicated and expensive Fibre Channel network. Replication between data centers can be easily implemented without buying additional software and licenses for various machines, because PS Series arrays include all expanded functionality at no additional cost. With a complete suite of data protection tools included, the Dell EqualLogic PS Series enables cost-effective remote replication, which is now integrated with VMware Site Recovery Manager for complete virtual datacenter protection.

BENEFITS OF DEPLOYING VMWARE SITE RECOVERY MANAGER WITH PS SERIES ARRAYS:

- Easy management.
Save time through virtualization. In about an hour, a PS Series SAN can be operational, providing storage to and replicating virtual machines. Dell EqualLogic's management simplicity is a perfect match for centralized deployment and protection of virtual machines. It is simple to set up replication partners and protection groups for a rapid Site Recovery Manager deployment.
- Bundled data protection.
PS Series storage is bundled with a complete set of tools including snapshots, clones, and replication, helping to reduce the cost of SRM deployments and business continuity.
- Enterprise reliability.
The PS Series is designed with 99.999% availability in mind and uses a redundant, RAID-protected, hot-pluggable storage architecture. Advanced system and disk monitoring capabilities enhance system availability.
- Native IP-based replication over any distance.
Auto-Replication integrates directly into the IP network, overcoming distance limitations and helping to reduce the cost and complexity of WAN integration.
- DR testing, failover, and failback support.
Auto-Replication provides seamless testing, failover, and failback support, providing IT administrators with the knowledge that their DR deployments are functioning properly.

